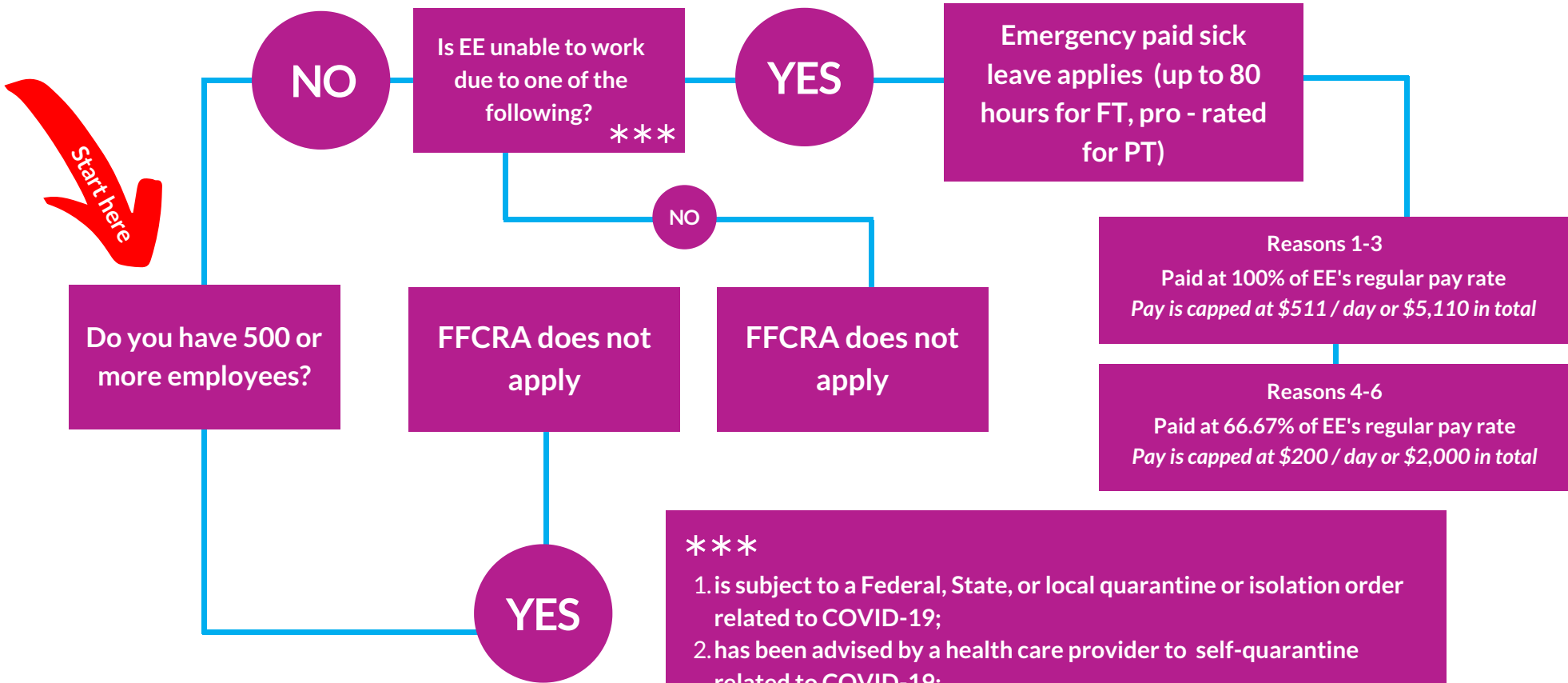


Emergency Paid Sick Leave Guidelines



April 1, 2020 - December 31, 2020

SDL+GHS

An Insurance Agency

Follow us on Facebook & keep an eye on grouphealthsolutions.com/blog for updates

- ***
1. is subject to a Federal, State, or local quarantine or isolation order related to COVID-19;
 2. has been advised by a health care provider to self-quarantine related to COVID-19;
 3. is experiencing COVID-19 symptoms and is seeking a medical diagnosis;
 4. is caring for an individual subject to an order described in (1) or self-quarantine as described in (2);
 5. is caring for his or her child whose school or place of care is closed (or child care provider is unavailable) due to COVID-19 related reasons; or
 6. is experiencing any other substantially - similar condition specified by the U.S. Department of Health and Human Services